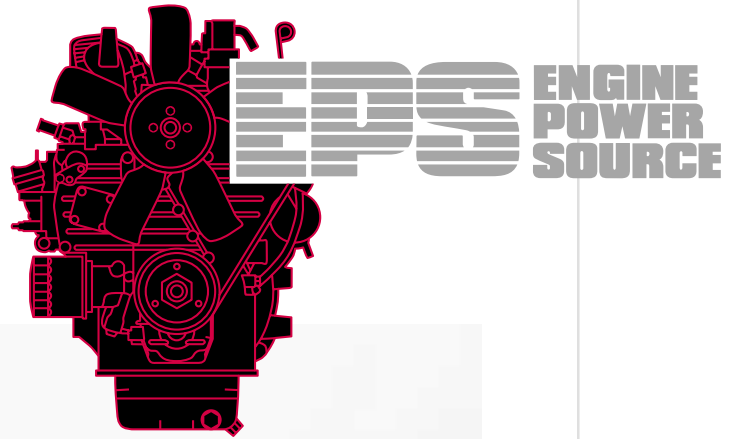


AUXILIARY DIESEL GENERATORS



Typical Applications:

- *Bus and Motor Coach*
- *Race Trailers*
- *Emergency Vehicles*
- *Construction Equipment*
- *Many Others*

EPS Mobile Auxiliary Diesel Generators

If you're looking for a reliable, cost-effective auxiliary generator for a mobile application, it's hard to beat Engine Power Source – one of the oldest and largest Kubota distributors in the U.S. These rugged gensets reflect our extensive knowledge of engines, electrical generators and application engineering, so you can be assured of trouble-free installation and long-term performance.

Each of the eight models was developed from the ground up to accommodate a wide array of applications. And with a variety of options to choose from, it's easy to configure a customized unit to suit your particular use, without the need for modifications during installation. In fact, given the many options we do offer, it wouldn't be inaccurate to say that a custom-built generator is our standard package.

All Engine Power Source products are backed by our comprehensive technical assistance and service before, during and after the sale. So if you'd like to learn more about our Mobile Auxiliary Generators, or any of our other products, call us today, or visit our web site at www.enginepowersource.com.



Models/Capacity

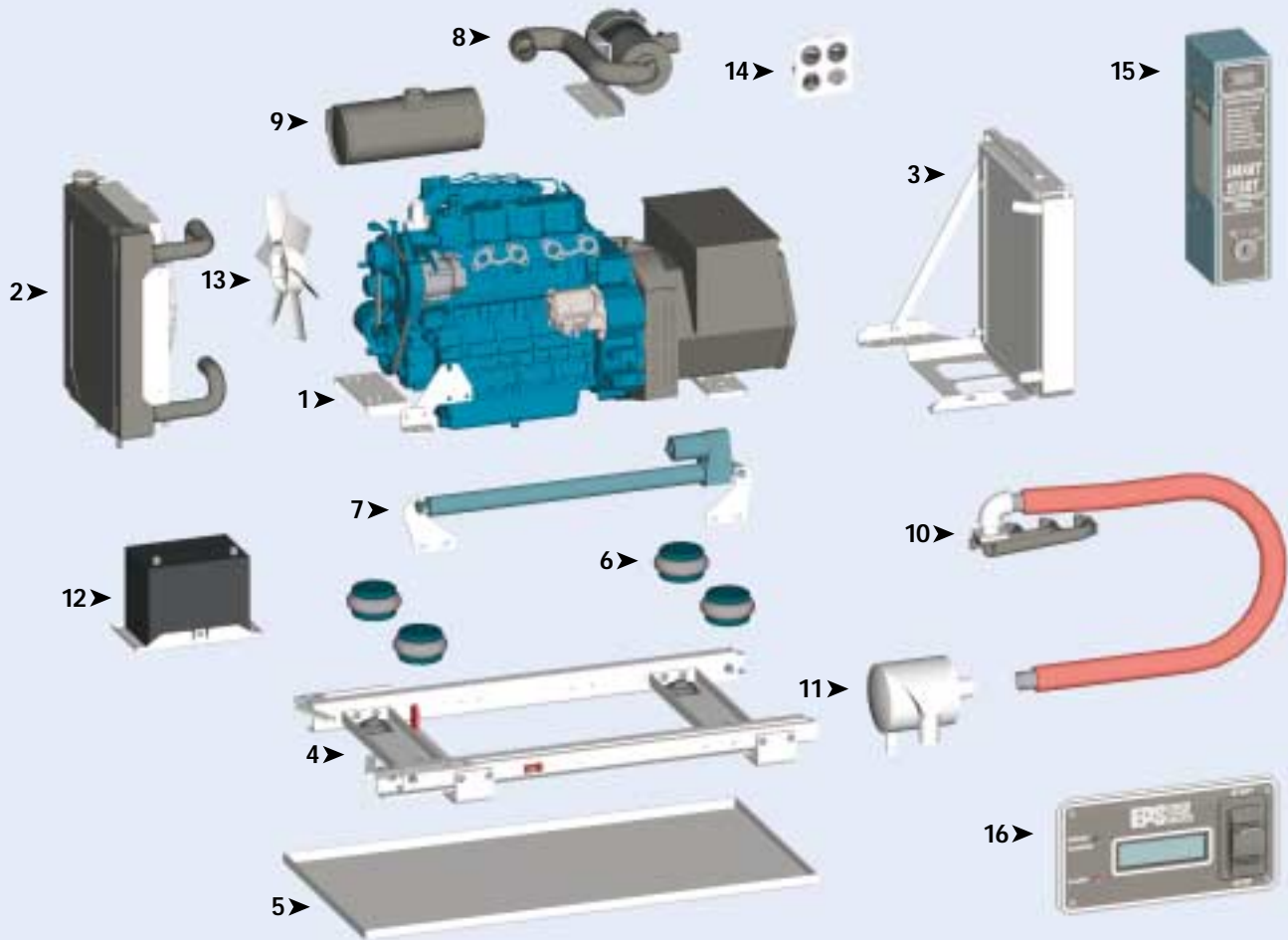
Eight base models to choose from with capacity from 7KW to 40KW (see back page for specifications).

Standard Features

- ▶ Compact and low profile for various installations.
- ▶ Kubota water-cooled diesel engine ensures reliability, long life and low cost operation.
- ▶ 1800 RPM operation for quiet operation and maximum engine life.
- ▶ 12VDC alternator and electrical system with color-coded wiring for easy service and maintenance.
- ▶ One-side service – spin-on fuel filter, oil filter and single-stage air cleaner.
- ▶ Electric fuel pump (shipped loose) allows for a reliable connection to a remote fuel supply.
- ▶ Manual Start/Stop control panel with hourmeter.
- ▶ Shutdowns for low oil pressure and high coolant temperature.
- ▶ Single phase, 120/240V Newage brushless generator with +/-1.5% AC voltage regulation.
- ▶ Pedestal mounting feet.
- ▶ Operator's manuals, schematic diagrams and general installation instructions included.

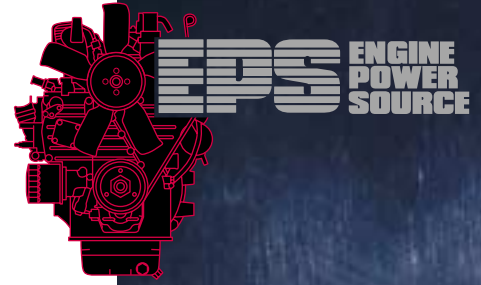
Powered by
TOUGH
Kubota
STUFF

Customized For You



Available Options and Accessories

- | | |
|--|--|
| 1▶ Base Unit
<i>Eight models available; 7-40KW.</i> | 9▶ Manifold Muffler
<i>Low noise and compact.</i> |
| 2▶ Front Radiator Kit (Copper/Brass or Aluminum)
<i>Easy, cost-effective installation.</i> | 10▶ Stainless Steel Flex Exhaust
<i>Enables easy installation.</i> |
| 3▶ Rear Radiator Kit (Aluminum)
<i>Reduces overall height and noise.</i> | 11▶ Swirl Silencer
<i>Critical grade; minimal noise.</i> |
| 4▶ Roller Frame
<i>End or side slide available.</i> | 12▶ Battery Tray
<i>Mounted tray moves with roller frame.</i> |
| 5▶ Drip Tray
<i>Catches dirt and drips; easy to install.</i> | 13▶ Pusher or Puller Fans
<i>Directs airflow for package flexibility.</i> |
| 6▶ Air Isolators
<i>Reduces vibration.</i> | 14▶ Remote Gauge Panel
<i>Allows driver to monitor system.</i> |
| 7▶ Electric Slide Actuator
<i>Push button control of roller frame.</i> | 15▶ Smart Start Engine Control Panel
<i>Auto Start/Stop – see back page for details.</i> |
| 8▶ Air Cleaner
<i>Enables easy maintenance.</i> | 16▶ Smart Start Remote Display Panel
<i>Easy installation – see back page for details.</i> |



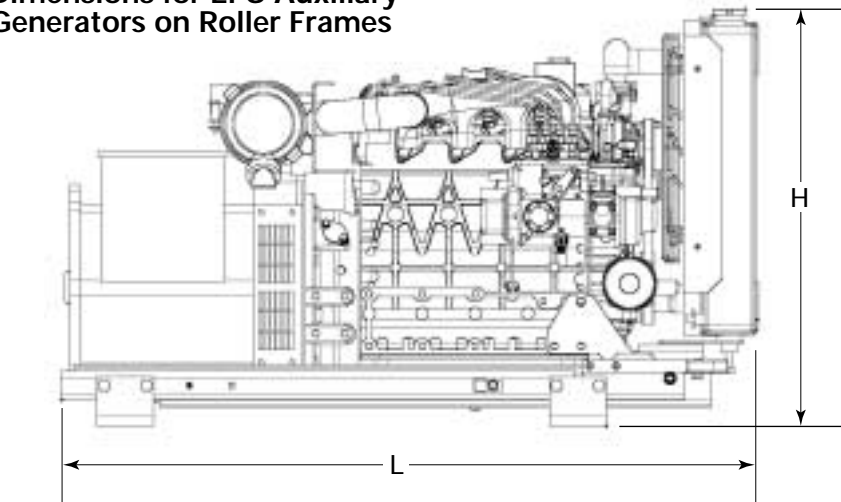
Optional Smart Start Control System

The Smart Start System provides simple one touch automatic starting and stopping from a remotely-mounted display panel. Oil pressure, water temperature, charging volts, engine RPM and running hours continuously scroll across the LCD screen, and in the event of a problem, the Smart Start System alerts the user and automatically shuts the engine down before severe damage can occur. Any warnings or shutdowns, along with their possible causes, are displayed on the screen. In the event of a problem, fault codes recorded in the panel's memory can be easily accessed.

The Engine Control Panel contains a multi-position key-switch that allows you to bypass the electronics and manually start and stop the engine. The low oil and high temperature shutdown functions remain active when operating in the bypass mode. And the connection between the Remote Display Panel and the Engine Control Panel is fast and easy using a 1/4" diameter, 4-wire shielded plug-in cable (up to 75' long) – which means there are no bulky wiring harnesses to install.

The Smart Start system is truly the future in mobile genset controls, and found only on EPS Mobile Auxiliary Generators.

Dimensions for EPS Auxiliary Generators on Roller Frames



3D CAD Drawings Available

Model	KW	L	W	H
10007	7	47.6	24.5	29.5
10009	9	47.6	24.5	29.5
10012	12	47.6	24.5	29.5
10015	15	49.2	24.5	29.5
10020	20	49.2	24.5	29.5
10024	24	52.7	24.5	29.5
10030*	30	57.0	28.9	30.9
10040	40	72.9	30.0	37.0

* Dimensions shown for rear mount radiator on 30 KW unit

www.enginepowersource.com

Powered by

Kubota

Engine Power Source
 220 Olympic Street
 Charlotte, NC 28273
 800-374-7522
 704-944-1999