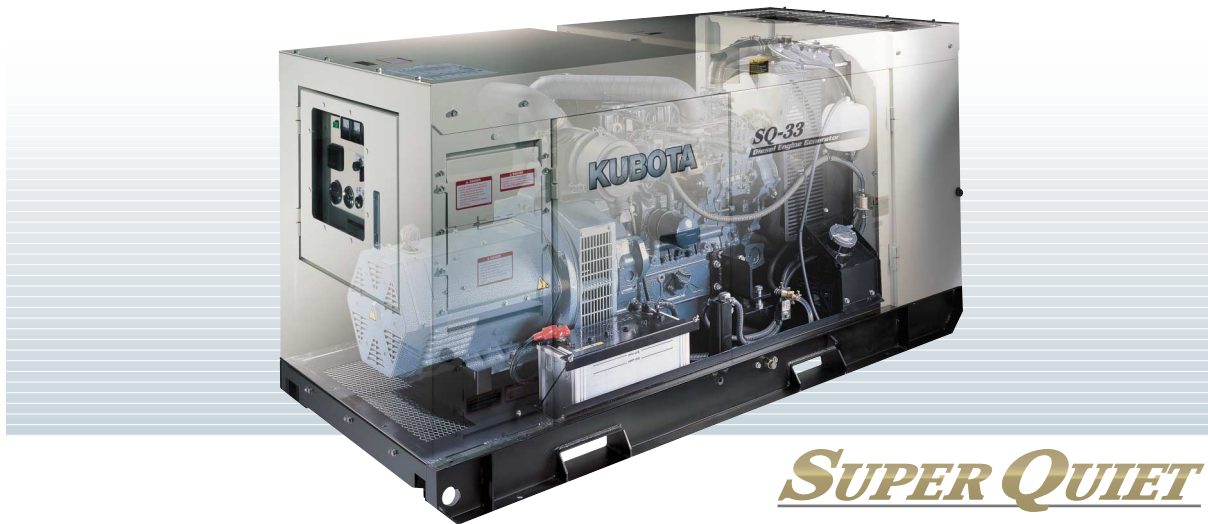


Satisfied with Quiet? Meet the Super Quiet series!



SUPER QUIET

1. Super Quiet

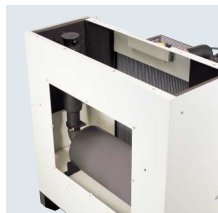
Over-Sized Muffler

Sound levels have been lowered by an over-sized muffler.

Second Muffler (for SQ-33SW only)

A special 2-stage muffler system is used in generators powered by the V3300 to reduce noise even further.

Model	Sound Level During Rated Output at 23 ft. (7m) [dB(A)]
SQ-14	63.0
SQ-21	64.0
SQ-26SW	64.0
SQ-33SW	65.0



2. Easy Maintenance

Easy One-Side Maintenance

Engine oil and coolant drain extensions are provided to ease regularly scheduled maintenance. Oil gauge, oil filter, oil replenishment port, fuel filter, water reserve tank, battery and air cleaner are all located on one side for quick inspection and maintenance.



3. Safety

Safety Measures

All engines for SQ series generators are ECU-controlled. Automatic shutdown of the engine if abnormal condition (abnormal oil pressure or water temperature, excessive speed, broken fan belt) or if load center doors are opened during operation.



3. Safety

Locking Control Panel Door

Shields instrument panel from the elements and permits observation of all key functions without opening the door.



4. Operator Friendly

Transportability

One-point lifting eye makes it easy to transport all SQ series generators. Special forklift openings are located on the base of the machine.



Longer Continuous Operation

Large-capacity fuel tank (21.5gal; 81.4L) enables longer continuous operation on a single tank.

5. ATS

Access Terminals for ATS Make Wiring Easy

Access terminals for Automatic Transfer Switches (ATS) are located behind the left side of load center doors.



SPECIFICATIONS

**GL
SERIES**



**KJ
SERIES**



**SQ
SERIES**



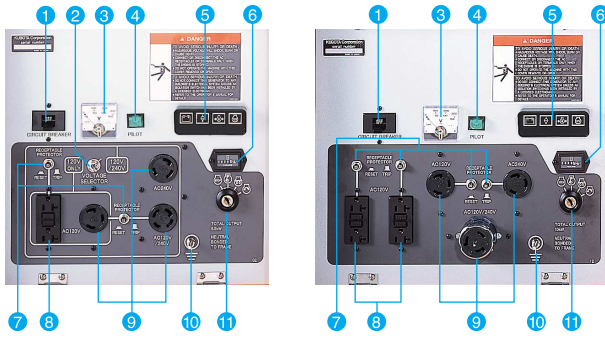
MODEL	Unit	GL7000	GL7000TM	GL11000	GL11000TM	KJ-13	KJ-20	SQ-14	SQ-21	SQ-26SW	SQ-33SW						
Type	-	Rotating field single-phase AC generator				Revolving field, brushless AC generator		Revolving field, brushless AC generator									
Frequency	Hz	60				60		60									
Standby Output	kVA (kW)	7.0 (7.0)		11.0 (11.0)		13.8 (13.8)	20.6 (20.6)	14.2 (14.2)	21.6 (21.6)	27.6 (22.1)	20.5(20.5)	34.8 (27.8)	25.2(25.2)				
Prime Output	kVA (kW)	6.5 (6.5)		10.0 (10.0)		12.5 (12.5)	19.6 (19.6)	13.5 (13.5)	20.6 (20.6)	26.3 (21.0)	19.5(19.5)	33.1 (26.5)	24.0(24.0)				
Voltage - Single Phase	V	120/240				120/240		120/240		120/240		120/240					
Voltage - Three Phase	V	-				-		-		480 240		480 240					
Armature Connection	-	Series				Series		Series		Star with neutral		Zig-Zag					
Phase / Wire	-	1-4		1-3		1-3		1-3		3-12		3-12					
Power Factor	-	1.0				1.0		1.0		1.0		1.0					
No. of Poles	-	2				4		4		4		4					
Insulation	Class	Rotor coil; class F, Stator coil; class B				H		H		H		H					
Voltage Regulation	%	-				3.5 (No load to full load)		2.5 (No load to full load)		2.5 (No load to full load)		2.5 (No load to full load)					
Type of Coupling	-	Direct coupled				Direct coupled		Direct coupled		Direct coupled		Direct coupled					
AMPS																	
Single Phase 120V	A	27.1 x 2	27.1 x 2	41.7 x 2	41.7 x 2	52.1 x 2	81.7 x 2	56.3 x 2	85.8 x 2	-	-	81.3 x 2	-	-	100.0 x 2		
Single Phase 240V	A	27.1	27.1	41.7	41.7	52.1	81.7	56.3	85.8	-	-	81.3	-	-	100.0		
Three Phase 208V	A	-	-	-	-	-	-	-	-	-	63.3	-	-	79.6	-		
Three Phase 480V	A	-	-	-	-	-	-	-	-	31.6	-	-	39.8	-	-		
NO. OF RECEPTACLES																	
5-15R (GFCI)	-	N/A	N/A	N/A	N/A	-	-	-	-	-	-	-	-	-	-		
5-20RA (GFCI)	-	1	1	2	1	1	1	1	1	1	1	1	1	1	1		
6-15R	-	N/A	N/A	N/A	N/A	-	-	-	-	-	-	-	-	-	-		
L5-20R	-	-	-	-	-	1	1	-	-	-	-	-	-	-	-		
L5-30R	-	1	-	1	-	-	-	1	1	-	-	-	-	-	1		
L6-30R	-	1	-	1	-	1	1	-	-	-	-	-	-	-	-		
L14-30R	-	1	-	-	-	-	-	1	-	-	-	-	-	-	1		
CS-6369	-	-	-	1	-	1	1	1	2	2	2	2	2	2	2		
TERMINAL																	
Terminal	-	Available	Available	Available	Available	Available	Available	Available	Available	Available	Available	Available	Available	Available	Available		
DIESEL ENGINE																	
Type	-	Vertical, liquid-cooled, 4-cycle diesel engine				Vertical, liquid-cooled, 4-cycle diesel engine		Vertical, liquid-cooled, 4-cycle diesel engine									
Model	-	Z482		D722		D1703-M		V2203-M		D1703-M		V2403-M		V2403-M		V3300	
No. of Cylinders	-	2		3		3		4		3		4		4		4	
Bore x Stroke	mm (in.)	67.0 x 68.0 (2.6 x 2.7)		67.0 x 68.0 (2.6 x 2.7)		87 x 92.4 (3.43 x 3.64)		87 x 92.4 (3.43 x 3.64)		87 x 92.4 (3.43 x 3.64)		87 x 102.4 (3.43 x 4.03)		87 x 102.4 (3.43 x 4.03)		98 x 110 (3.86 x 4.33)	
Displacement	LL (cu. in.)	0.479 (29.2)		0.719 (43.9)		1.647 (100.5)		2.197 (134.1)		1.647 (100.5)		2.434 (148.5)		2.434 (148.5)		3.318 (202.5)	
Engine Speed	rpm	3600				1800		1800		1800		1800		1800		1800	
Continuous Rated Output	kW (HP)	8.1 (10.9)		12.2 (16.3)		17.3 (23.2)		23.7 (31.8)		17.3 (23.2)		23.7 (31.8)		23.7 (31.8)		29.9 (40.1)	
Lubricant (API classification)	-	Above CF grade				Above CF grade		Above CF grade		Above CF grade		Above CF grade		Above CF grade		Above CF grade	
Oil Capacity	L(qts.)	2.2 (0.58)		3.4 (0.9)		7.0 (7.4)		9.5 (10.0)		7.0 (7.4)		9.5 (10.0)		9.5 (10.0)		13.2 (13.9)	
Coolant Capacity	L(qts.)	3.7 (0.98)		4.1 (1.1)		6.9 (7.3)		8.7 (9.2)		6.9 (7.3)		7.8 (8.2)		7.8 (8.2)		9.5 (10.0)	
Starting System	-	Electric - 12 volt DC				Electric - 12 volt DC		Electric - 12 volt DC		Electric - 12 volt DC		Electric - 12 volt DC		Electric - 12 volt DC		Electric - 12 volt DC	
SET																	
Fuel	-	Diesel fuel No.2 (ASTM D975)				Diesel fuel No.2 (ASTM D975)		Diesel fuel No.2 (ASTM D975)									
Fuel Consumption	at Full Load	L/h(gal./h)	2.6 (0.69)	4.1 (1.09)	4.80 (1.27)	6.90 (1.82)	4.24 (1.12)	6.82 (1.80)	6.82 (1.80)	9.0 (2.38)							
	at 3/4 Load	L/h(gal./h)	2.1 (0.55)	3.3 (0.86)	3.70 (0.98)	5.30 (1.40)	3.49 (0.92)	4.94 (1.31)	4.94 (1.31)	6.96 (1.84)							
	at 1/2 Load	L/h(gal./h)	1.7 (0.45)	2.7 (0.71)	2.80 (0.74)	4.00 (1.06)	2.76 (0.73)	3.60 (0.95)	3.60 (0.95)	5.31 (1.40)							
	at 1/4 Load	L/h(gal./h)	1.4 (0.38)	2.2 (0.59)	2.00 (0.53)	2.90 (0.77)	1.79 (0.47)	2.54 (0.67)	2.54 (0.67)	3.81 (1.01)							
Fuel Tank Capacity	L(gal.)	28.0 (7.4)	28.0 (7.4)	37 (9.8)	37 (9.8)	81.4 (21.5)	81.4 (21.5)	81.4 (21.5)	81.4 (21.5)	81.4 (21.5)	81.4 (21.5)						
Continuous Operation Hours	at Full Load	h	10.0	7.0	7.7	5.4	19.2	11.9	11.9	9.0							
	at 3/4 Load	h	13.3	8.5	10.0	7.0	23.3	16.5	16.5	11.7							
	at 1/2 Load	h	16.5	10.4	13.2	9.3	29.5	22.6	22.6	15.3							
	at 1/4 Load	h	20.0	12.7	18.5	12.8	45.5	32.0	32.0	21.4							
Battery (Ah/5h)	-	38B20R (12V x 28Ah)		55B24R (12V x 36Ah)		12V (64Ah)		12V (64Ah)		12V (64Ah)		12V (64Ah)		12V (92Ah)			
Dimensions	mm	1066 x 618 x 698		1281 x 618 x 698		1429 x 779 x 971		1571 x 779 x 971		1750 x 914 x 1044		1845 x 914 x 1044		1845 x 914 x 1044		2047 x 914 x 1044	
	(in.)	42.0 x 24.3 x 27.5		50.4 x 24.3 x 27.5		56.3 x 30.7 x 38.2		61.9 x 30.7 x 38.2		70.0 x 36.6 x 41.8		73.8 x 36.6 x 41.8		73.8 x 36.6 x 41.8		81.9 x 36.6 x 41.8	
Approx. Net Weight	kg(lbs.)	235 (518)		295 (650)		480 (1058)		555 (1224)		668 (1470)		728 (1605)		742 (1632)		917 (2017)	
Sound Level (Full Load at 23 ft. [7m])	dB (A)	66		68		75.5		76.5		63.0		64.0		64.0		65.0	
Emergency Stop System	-	In case of abnormal: Oil pressure, water temperature, or When the access terminal cover is opened (terminal type only)				In case of abnormal: Oil pressure, water temperature, fan belt broken, when the side cover and door open while running		In case of abnormal: Oil pressure, water temperature, fan belt broken, when the side cover and door open while running									

*Specifications and dimensions are subject to change without prior notice.

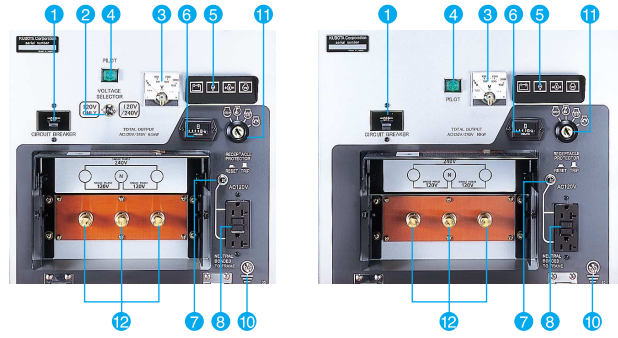
CONTROL PANEL

GL SERIES

GL7000/GL11000



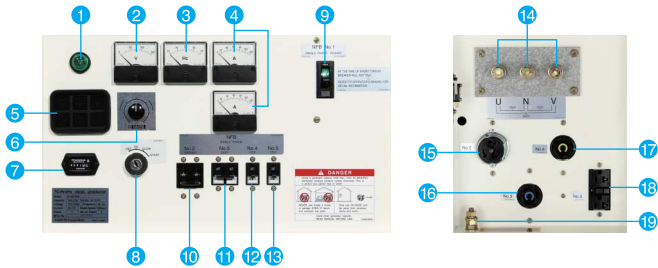
GL7000TM/GL11000TM



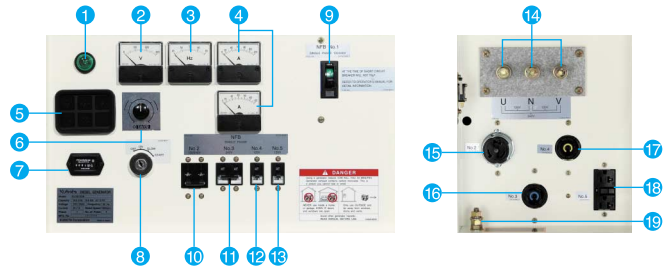
- 1 Circuit Breaker
- 2 Voltage Selector Switch
- 3 AC Voltmeter
- 4 Pilot Lamp
- 5 Monitor Lamps
- 6 Hour Meter
- 7 Receptacle Protector
- 8 GFCI
- 9 Output Receptacles
- 10 Ground Terminal
- 11 Key Switch
- 12 Output Terminals

KJ SERIES

KJ-13



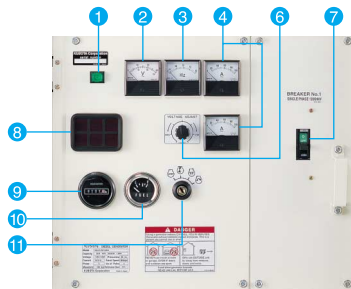
KJ-20



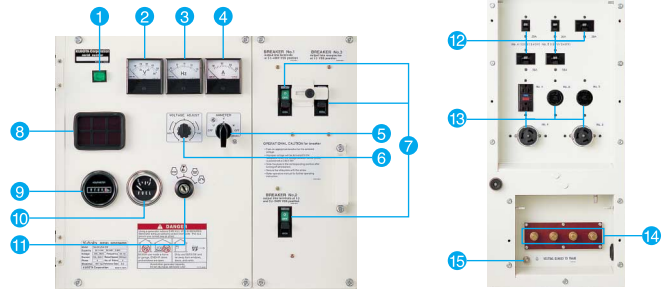
- 1 Pilot Lamp
- 2 A.C. Voltmeter
- 3 Frequency Meter
- 4 A.C. Ammeter
- 5 Monitor Lamps
- 6 Voltage Adjuster
- 7 Hour Meter
- 8 Key Switch
- 9~13 No-Fuse Breaker
- 9 No.1 10 No.2 11 No.3 12 No.4 13 No.5
- 14 Output Terminals (U,N,V)
- 15~18 Output Receptacles
- 15 120/240V (CS6369)
- 16 120V (L6-30R)
- 17 120V (L5-20R)
- 18 120V (5-20R,GFI)
- 19 Ground Terminal

SQ SERIES

SQ-14/SQ-21



SQ-26SW/SQ-33SW



(SQ-33)

- 1 Pilot Lamp
- 2 A.C. Voltmeter
- 3 Frequency Meter
- 4 A.C. Ammeter
- 5 Ammeter Phase
- 6 Voltage Adjuster
- 7 Circuit Breaker
- 8 Monitor Lamps
- 9 Hour Meter
- 10 Fuel Gauge
- 11 Key Switch
- 12 No-Fuse Breaker
- 13 Output Receptacles
- 14 Output Terminals
- 15 Ground Terminal



Kubota Engine America Corporation

505 Schelter Road, Lincolnshire, IL 60069
 Phone: 847-955-2500 Fax: 847-955-2699
<http://www.kubotaengine.com>